

Trends in Crime and Justice

Reflections on the New York City Story, 1980-2017

Jeremy Travis
Executive Vice President of Criminal Justice
Arnold Ventures

CityLaw Breakfast Series
New York Law School

March 8, 2019

Acknowledgments

- Arnold Ventures, Data Collaborative for Justice, and New York Law School.
- The data supporting these analyses were provided by the New York State Division of Criminal Justice Services (DCJS), the New York City Police Department (NYPD), the Office of Court Administration (OCA) and the Department of Correction (DOC). The opinions, findings and conclusions expressed here are those of the author and not those of DCJS, NYPD, OCA, or DOC. Those agencies do not assume liability for the contents of the speech nor use thereof.



Realities and Reflections

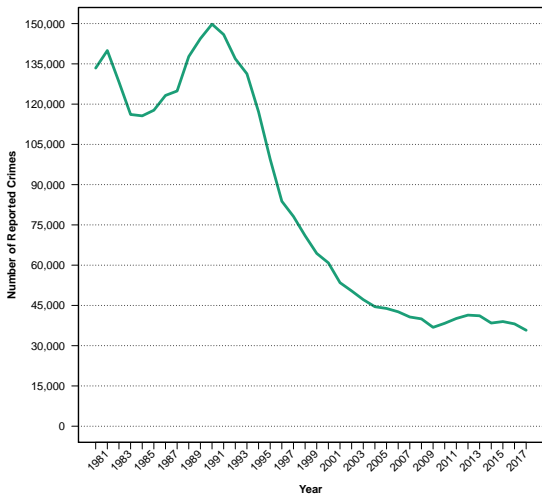
- Five New York Realities

- 1 Low Crime Rates
- 2 Low Enforcement Rates
- 3 Low Incarceration and Supervision Rates
- 4 The Consequences of Drug Enforcement
- 5 Persistent Racial Disparities

- Reflections

Reality Number One: Low Crime Rates

Number of Reported Crimes in New York City, 1980-2017



Data Source: New York City Police Department (NYPD)

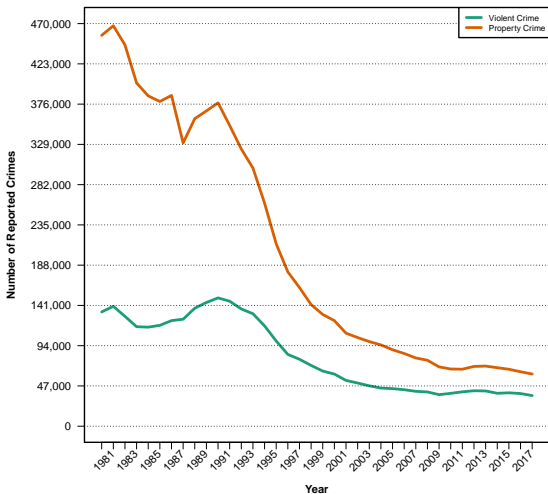
Violent Crime

1984-1990: 29.5% Increase

1990-2017: 76.1% Decline



Number of Reported Crimes in New York City, 1980-2017



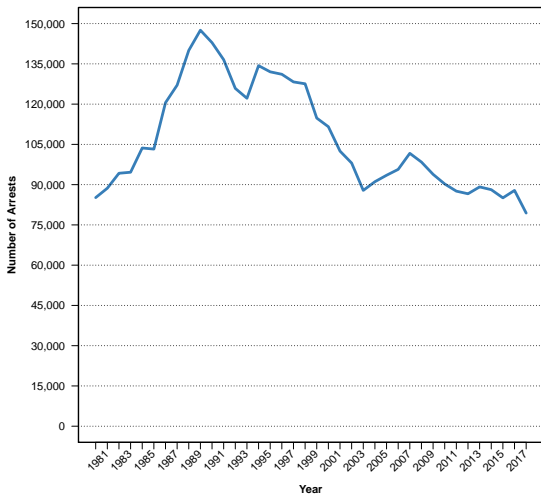
Data Source: New York City Police Department (NYPD)

Property Crime
1981-2017: 87.0% Decline



Reality Number Two: Low Enforcement Rates

Enforcement Actions in New York City



Data Source: Data Source: Division of Criminal Justice Services (DCJS)

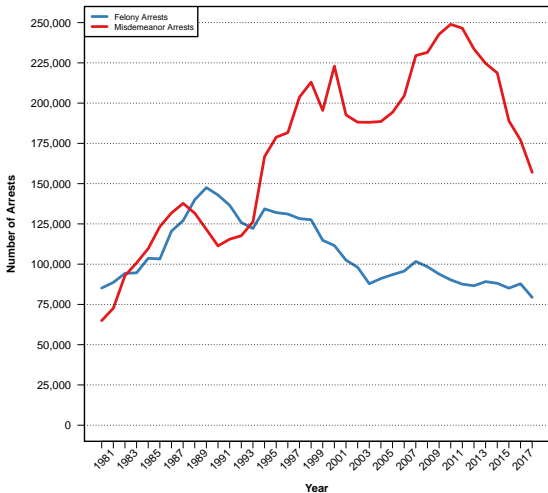
Felony Arrests

1980-1989: 73.2% Increase

1989-2017: 46.2% Decline



Enforcement Actions in New York City

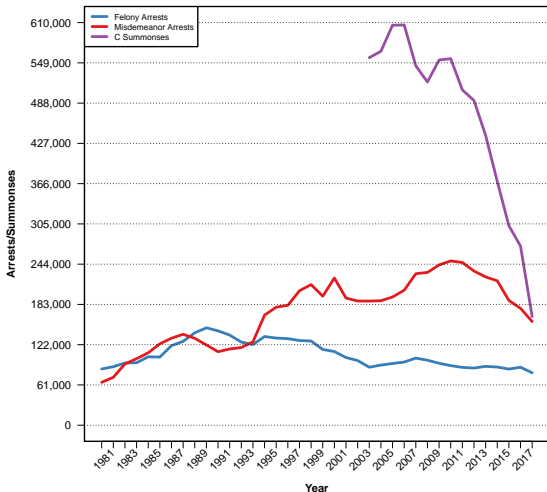


Data Source: Data Source: Division of Criminal Justice Services (DCJS)

Misdemeanor Arrests
1980-2010: 283.3% Increase
2010-2017: 36.9% Decline



Enforcement Actions in New York City

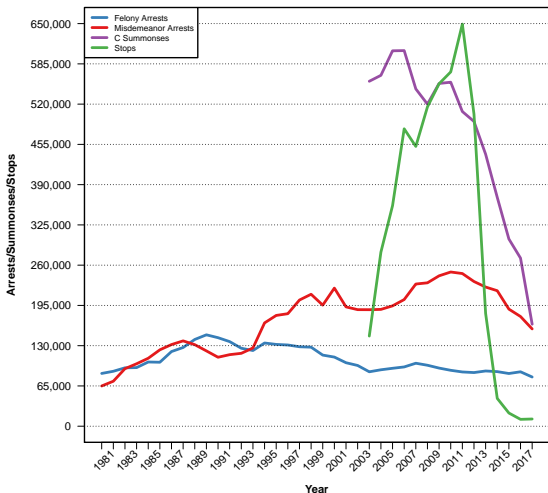


Criminal Summonses
2003-2006: 8.4% Increase
2006-2017: 72.7% Decline

Data Source: Division of Criminal Justice Services (DCJS) and Office of Court Administration (OCA)



Enforcement Actions in New York City



Data Source: Division of Criminal Justice Services (DCJS), Office of Court Administration (OCA), and New York City Police Department (NYPD)

Stops

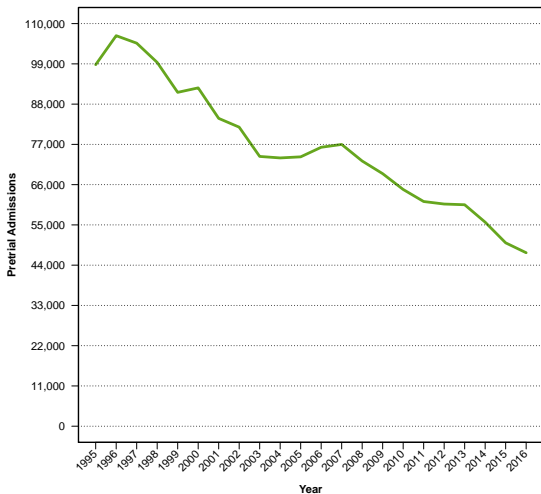
2003-2011: 346.1% Increase

2011-2017: 98.2% Decline



Reality Number Three: Low Incarceration and Supervision Rates

Pretrial Admissions in New York City, 1995-2016



Data Source: New York City Department of Correction (DOC)

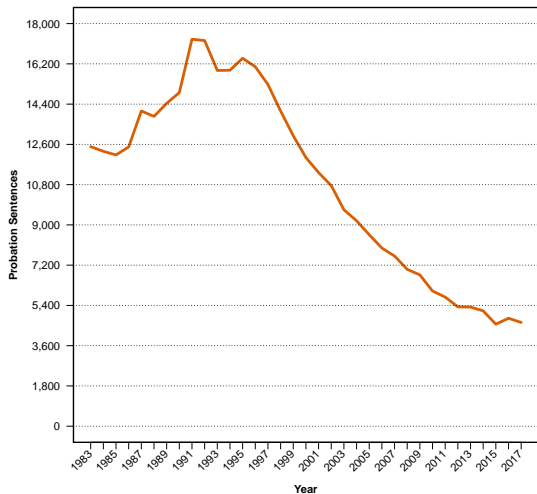
Pretrial Admissions

1995-1996: 8.0% Increase

1996-2016: 55.6% Decline



Probation Sentences in New York City, 1983-2017

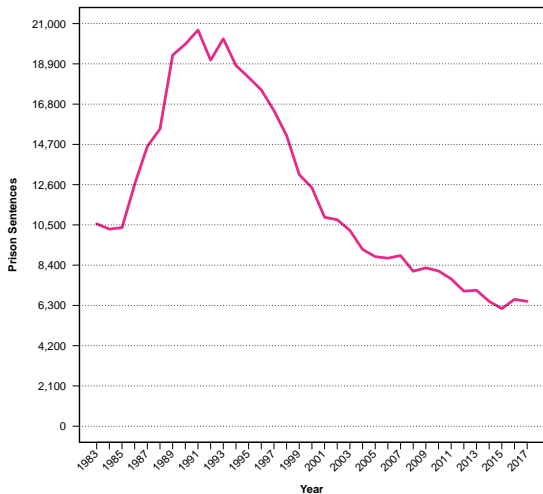


Data Source: Division of Criminal Justice Services (DCJS)

Probation Sentences
1985-1991: 42.7% Increase
1991-2017: 73.2% Decline



Prison Sentences in New York City, 1983-2017



Data Source: Division of Criminal Justice Services (DCJS)

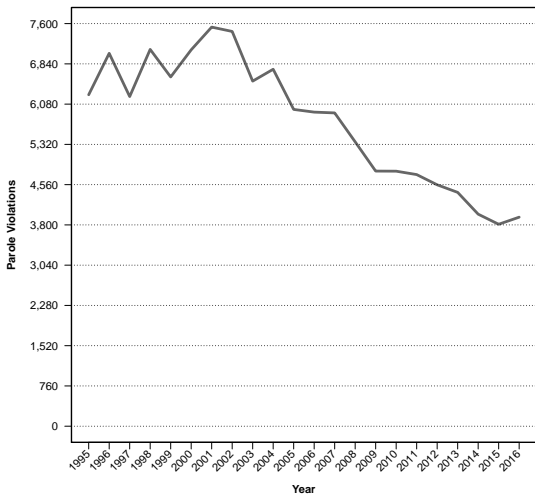
Prison Sentences

1984-1991: 101.0% Increase

1991-2017: 68.5% Decline



Parole Violations in New York City, 1995-2016



Data Source: New York City Department of Correction (DOC)

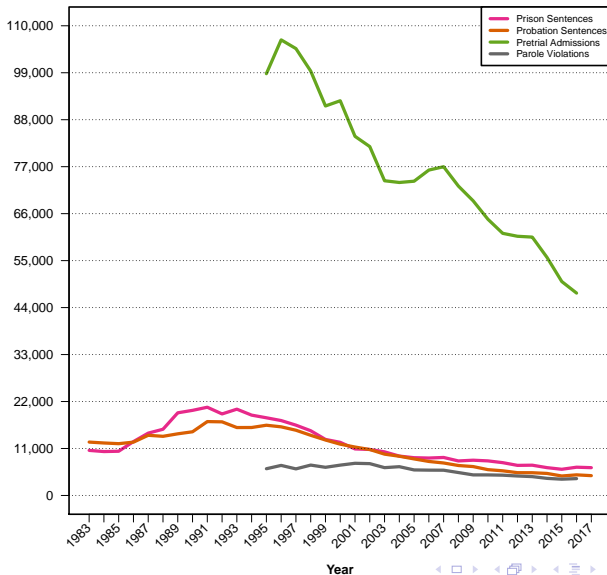
Parole Violations

1997-2001: 21.1% Increase

2001-2016: 47.6% Decline

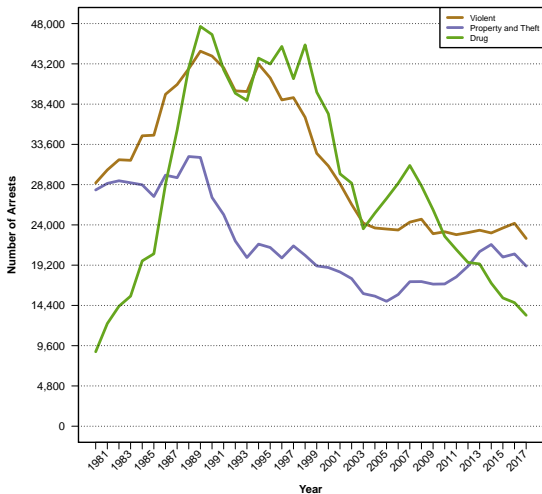


Incarceration and Supervision in New York City



Reality Number Four: The Consequences of Drug Enforcement

Felony Arrests for Drug Charges in New York City, 1980-2017

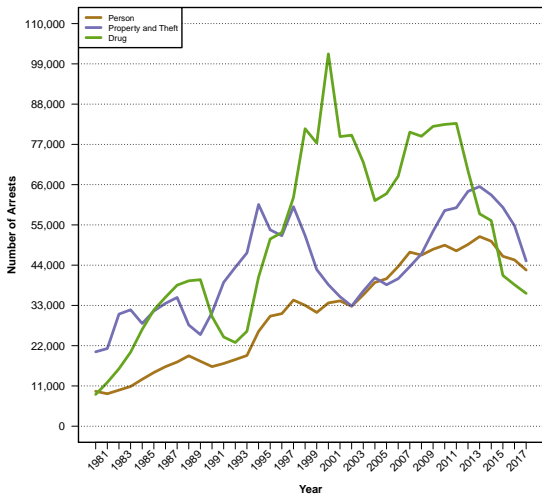


Data Source: Data Source: Division of Criminal Justice Services (DCJS)

Felony Drug Arrests
1980-1989: 436.9% Increase
1989-2017: 72.3% Decline



Misdemeanor Arrests for Drug Charges in New York City, 1980-2017

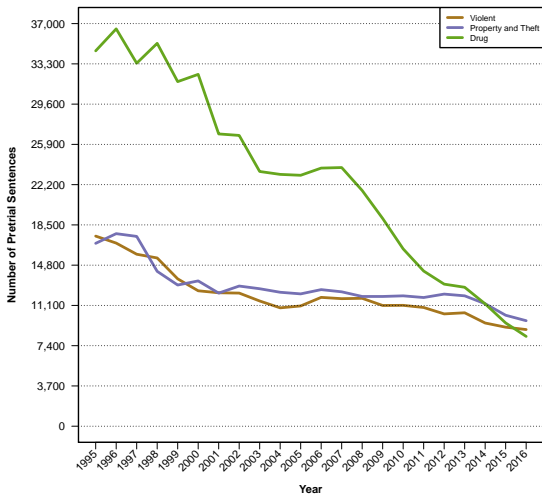


Data Source: Data Source: Division of Criminal Justice Services (DCJS)

Misdemeanor Drug Arrests
1980-2000: 1071.2% Increase
2000-2017: 64.3% Decline



Pretrial Admissions for Drug Charges in New York City, 1995-2016

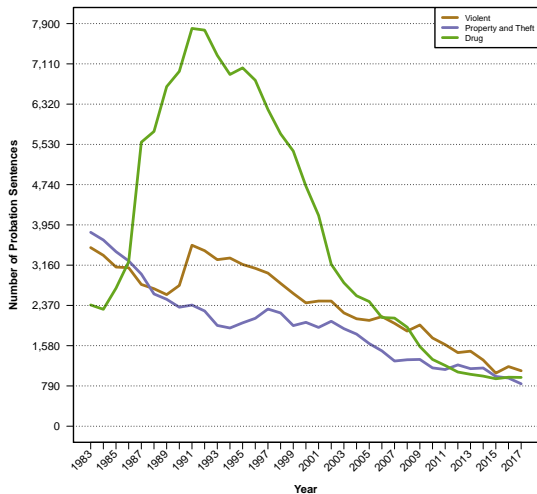


Data Source: New York City Department of Correction (DOC)

Pretrial Drug Admissions
1995-1996: 5.9% Increase
1996-2016: 77.4% Decline



Probation Sentences for Drug Charges in New York City, 1983-2017

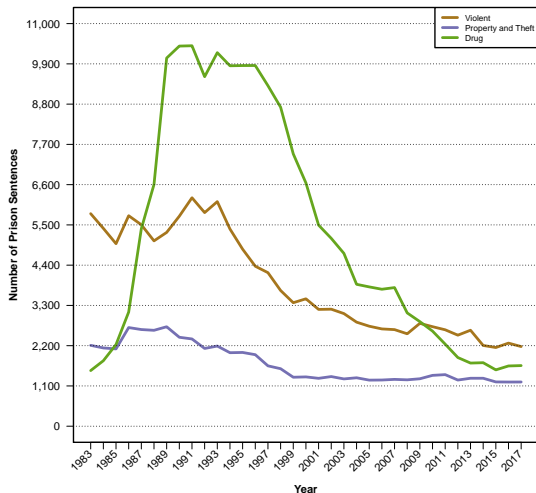


Data Source: Data Source: Division of Criminal Justice Services (DCJS)

Probation Drug Sentences
1984-1991: 240.2% Increase
1991-2017: 87.7% Decline



Prison Sentences for Drug Charges in New York City, 1983-2017



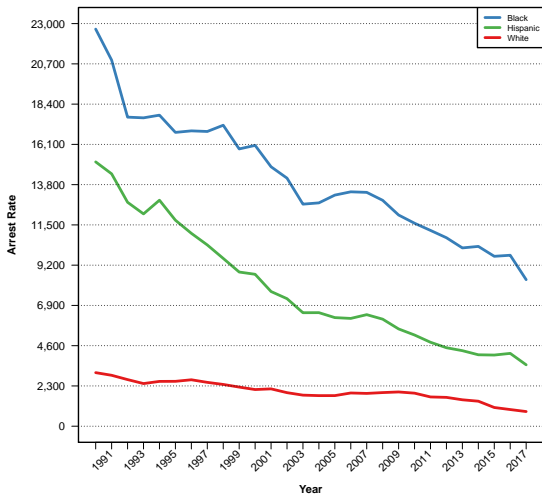
Data Source: Data Source: Division of Criminal Justice Services (DCJS)

Prison Drug Sentences
1983-1991: 583.9% Increase
1991-2017: 84.1% Decline



Reality Number Five: Persistent Racial Disparities

Felony Arrest Rates for Young Men (18-24) by Race in New York City, 1990-2017



Data Source: Data Source: Division of Criminal Justice Services (DCJS)

Black

1990-2017: 63.0% Decline

Hispanic

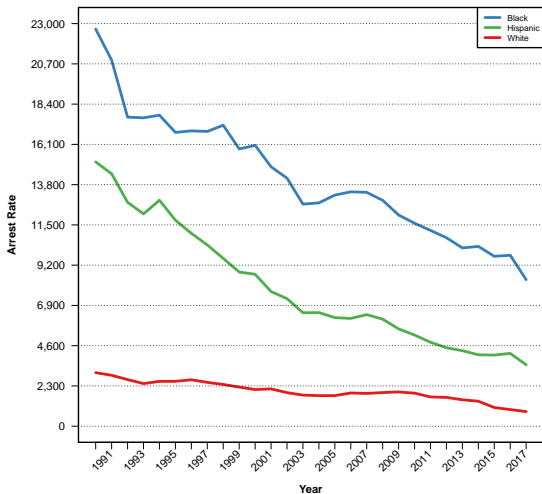
1990-2017: 68.7% Decline

White

1990-2017: 76.3% Decline



Felony Arrest Rates for Young Men (18-24) by Race in New York City, 1990-2017



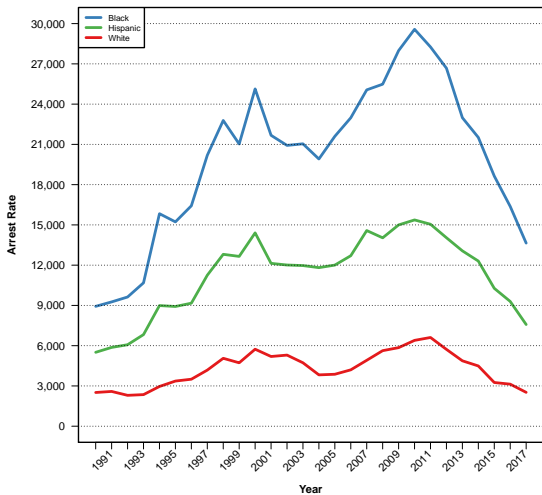
Data Source: Data Source: Division of Criminal Justice Services (DCJS)

Table: Racial Disparities in Felony Arrests

Year	Black/White
1990	7.4
2000	7.7
2010	6.1
2017	10.0



Misdemeanor Arrest Rates for Young Men (18-24) by Race in New York City, 1990-2017



Data Source: Data Source: Division of Criminal Justice Services (DCJS)

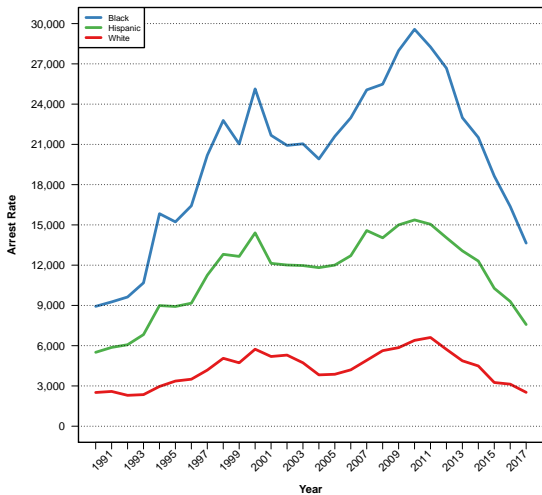
Black
2010-2017: 53.5% Decline

Hispanic
2010-2017: 48.8% Decline

White
2011-2017: 61.6% Decline



Misdemeanor Arrest Rates for Young Men (18-24) by Race in New York City, 1990-2017



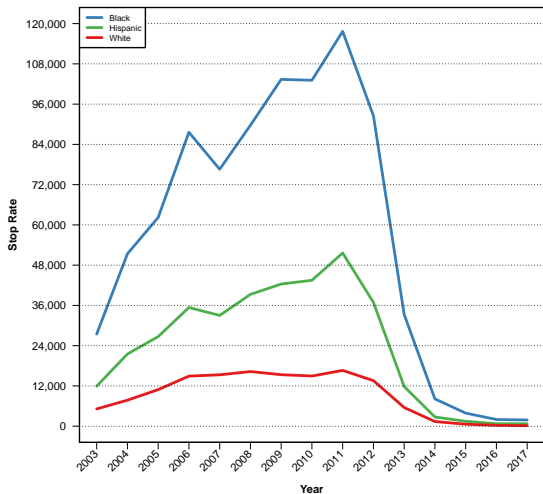
Data Source: Data Source: Division of Criminal Justice Services (DCJS)

Table: Racial Disparities in Misdemeanor Arrests

Year	Black/White
1990	3.6
2000	4.4
2010	4.6
2017	5.4



Pedestrian Stop Rates for Young Men (18-24) by Race in New York City, 2003-2017



Data Source: New York City Police Department (NYPD)

Black

2011-2017: 98.4% Decline

Hispanic

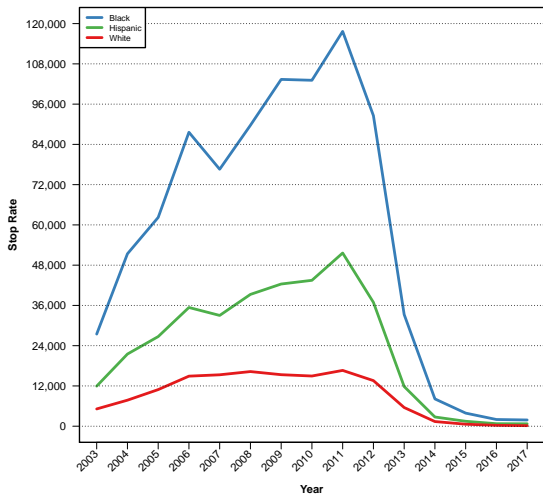
2011-2017: 98.6% Decline

White

2011-2017: 99.0% Decline



Pedestrian Stop Rates for Young Men (18-24) by Race in New York City, 2003-2017



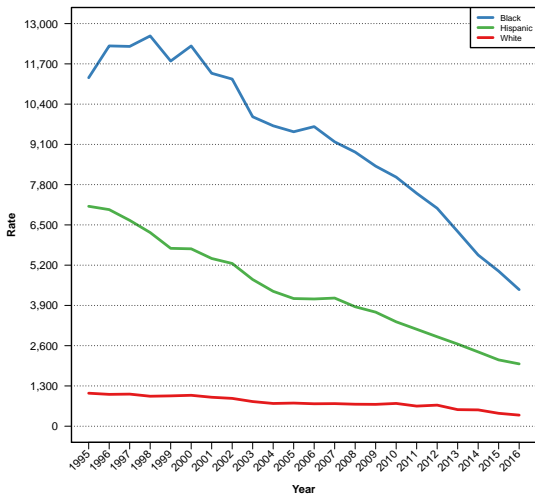
Data Source: New York City Police Department (NYPD)

Table: Racial Disparities in Stops

Year	Black/White
2003	5.3
2010	6.9
2017	11.6



Pretrial Admission Rates for Young Men (18-24) by Race in New York City, 1995-2016



Data Source: New York City Department of Correction (DOC)

Black

1998-2016: 63.5% Decline

Hispanic

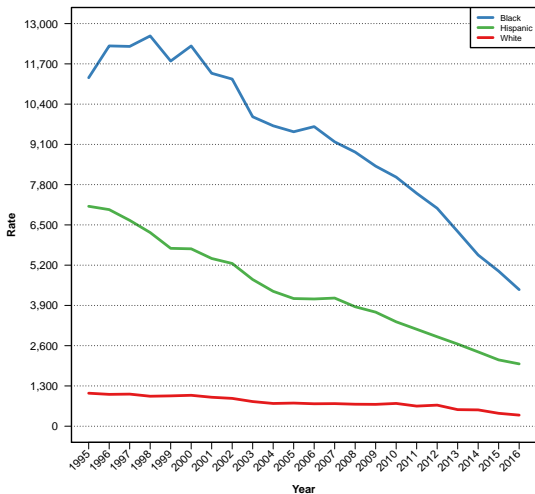
1996-2016: 64.9% Decline

White

1995-2016: 68.3% Decline



Pretrial Admission Rates for Young Men (18-24) by Race in New York City, 1995-2016



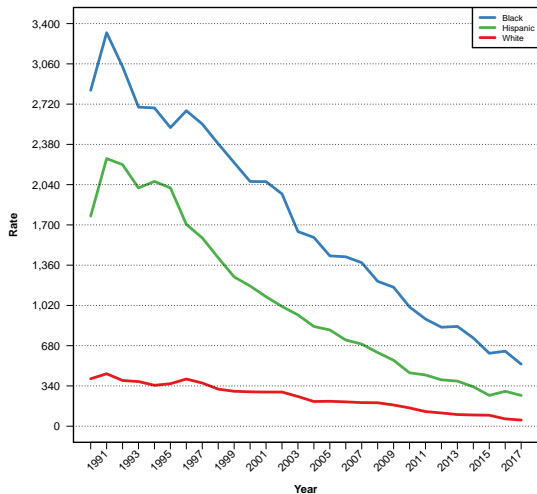
Data Source: New York City Department of Correction (DOC)

Table: Racial Disparities in Pretrial Admissions

Year	Black/White
1995	10.6
2000	12.3
2010	10.9
2016	12.3



Probation Sentence Rates for Young Men (18-24) by Race in New York City, 1990-2017



Data Source: Data Source: Division of Criminal Justice Services (DCJS)

Black

1991-2017: 84.1% Decline

Hispanic

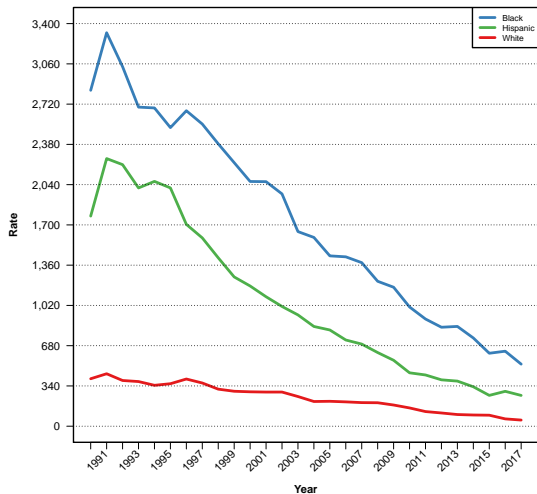
1991-2017: 84.8% Decline

White

1991-2017: 89.7% Decline



Probation Sentence Rates for Young Men (18-24) by Race in New York City, 1990-2017



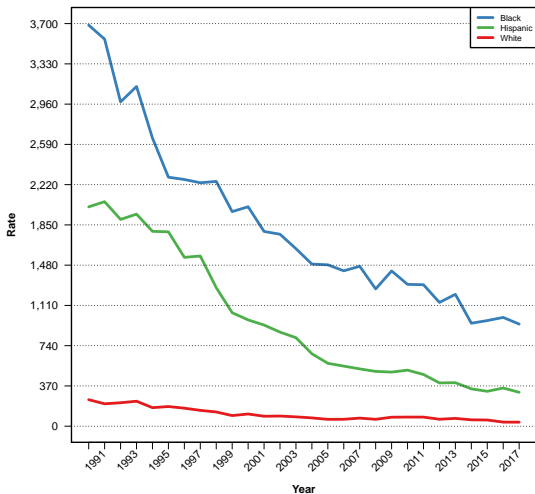
Data Source: Data Source: Division of Criminal Justice Services (DCJS)

Table: Racial Disparities in Probation Sentences

Year	Black/White
1990	7.1
2000	7.1
2010	6.5
2017	10.1



Prison Sentence Rates for Young Men (18-24) by Race in New York City, 1990-2017



Data Source: Data Source: Division of Criminal Justice Services (DCJS)

Black

1990-2017: 74.5% Decline

Hispanic

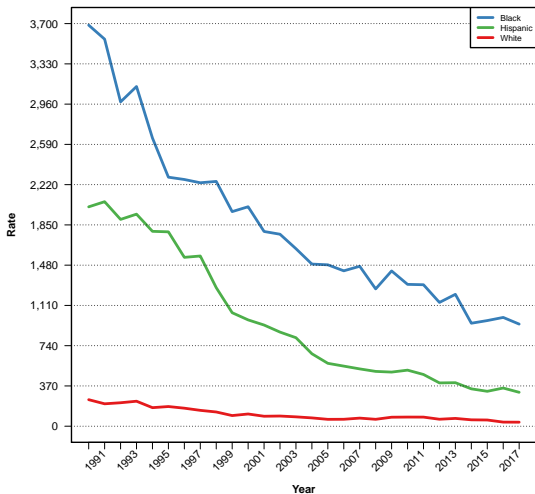
1991-2017: 80.0% Decline

White

1990-2017: 86.9% Decline



Prison Sentence Rates for Young Men (18-24) by Race in New York City, 1990-2017



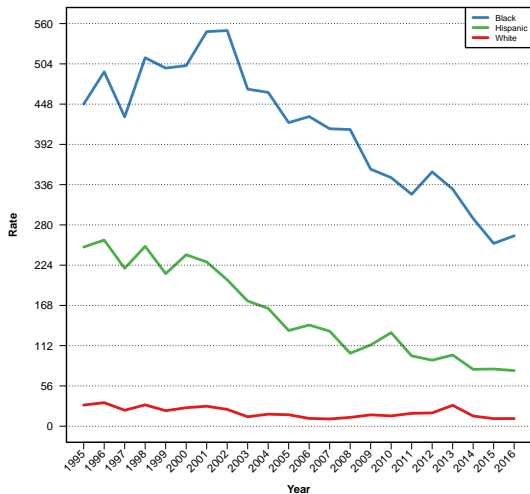
Data Source: Data Source: Division of Criminal Justice Services (DCJS)

Table: Racial Disparities in Prison Sentences

Year	Black/White
1990	15.1
2000	18.0
2010	15.5
2017	25.4



Parole Violation Rates for Young Men (18-24) by Race in New York City, 1995-2016



Data Source: New York City Department of Correction (DOC)

Black

2002-2016: 49.7% Decline

Hispanic

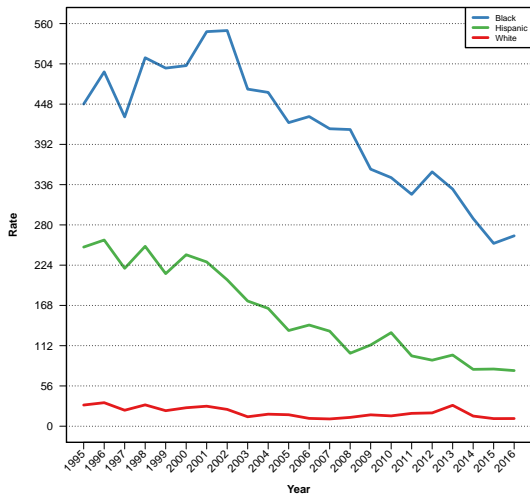
1996-2016: 63.6% Decline

White

1996-2016: 68.8% Decline



Parole Violation Rates for Young Men (18-24) by Race in New York City, 1995-2016



Data Source: New York City Department of Correction (DOC)

Table: Racial Disparities in Parole Violations

Year	Black/White
1995	15.2
2000	19.5
2010	24.1
2016	24.9



Reflections

For More Information Please Visit

- arnoldventures.org
- datacollaborativeforjustice.org